



Tadiran Telecom



**Coral® Solutions
for Education**

**Connecting Schools with
IP-Enabled Communications**



Improving Communications in Education

From primary school through college, the business of educating students and operating an educational institution is as complex as any industry. Your school relies on its communications system to keep the organization running smoothly. With resources stretched to the limit, cost containment and ease of management are of paramount importance.

But your communications system also needs to promote a safe learning environment and maximize access among students, parents, faculty and administrators. It needs to accommodate growth as enrollment increases or new functionality is required.

The IP-enabled Coral® provides sophisticated telephone solutions recognized by schools for their ease of management and premium-quality communications features. With advanced digital networking, including IP, Frame Relay and ISDN services, Coral addresses the unique needs of the smallest single-site school to the largest district or campus.



Coral allows schools to keep pace with growth while meeting the needs of today:

- Leverage next-generation voice and converged voice/data communication
- Control costs through an easy upgrade path
- Add capacity without losing your initial investment

The Choice for Growth

Schools require communications systems that can keep pace with growth while meeting the needs of today. You may be adding new offices, setting up satellite classrooms, or adding next-generation capabilities. Naturally, you want all locations to have the same advanced, seamless call management features.

With Coral, it's simple to deliver phone services that support your growing enrollment, because scalability is inherent in the Coral system design. You can easily grow from the compact Coral 200 through to the largest Coral 6000 without undergoing a wholesale change of your network investment. Furthermore, there is no need to learn new feature codes or operating procedures; all platforms use the same software and the same digital telephones.

The Choice for Containing Costs

Schools typically cannot afford to hire and train additional staff to administer complicated telephone systems. The answer is a full-featured phone system that offers plug-and-play setup, centralized administration and ease of management. To accommodate future demands, your phone system must provide an affordable, interoperable upgrade path.

Coral is designed to provide long-term value by protecting your investment in your communications system. The system architecture provides common hardware and software throughout the entire family of products. No additional training is required to support and maintain different sizes of Coral systems. Setup, moves, adds, changes, and ongoing administration can be effectively centralized and managed – within a single building, across the district or throughout the state.

Coral frees your school from dependence on multiple vendors to maintain proprietary systems. Coral systems interface with all legacy systems and those systems supporting the international QSIG standard.



The Coral 200 is a scalable, easy-to-use wall or rack-mounted system designed to support as few as 8 or as many as 120 stations – with all the functionality of a large telephone system.

As your school or district grows, move up to the Coral 400, 5000 or 6000.

Coral – The choice for...

- Growth management
- Cost containment
- Student and staff safety
- Leading-edge functionality
- Simple administration and management
- Full featured flexibility



The Choice for a Safe Learning Environment

The safety and security of students and staff are key concerns for schools today, and many are quickly responding to state-mandated emergency notification requirements.

Coral's E911 feature allows schools to inform emergency units of the exact building and room number from which a 911 call originates.

Furthermore, it can reduce response time by simultaneously alerting up to 13 additional parties that a 911 call is being placed. Coral will accept either 9,911 or 911 emergency dialing, eliminating the potential for wasted time in an emergency.



Keep pace with growth while meeting the needs of today.



Coral provides a number of features that address the safety of students and staff:

Silent Record may be activated during a conversation for replay at a later time. Archive, forward or save the conversation as a wave file attachment for e-mailing to others as needed.

Malicious Call Trace helps validate annoying or threatening calls by capturing a caller's telephone number (CLID or ANI) when activated by the attendant or station user.

FlexCT SureResponse® allows sensing and notification of events that occur in the Coral system. Events occurring locally or remotely can be logged and recorded for later review.

The Choice for Leading-edge Functionality

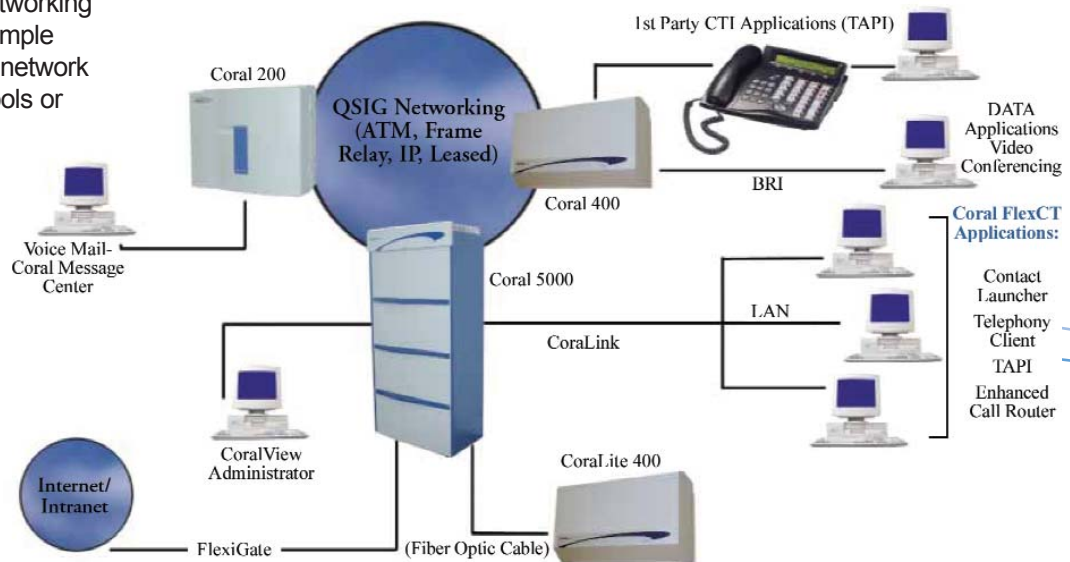
Coral QNet™ – Connect a campus or an entire district

Coral's advanced networking capability, Coral QNet™, is designed to the international QSIG standard, making it simple and cost-effective to network multiple offices, schools or campus buildings.

Take advantage of ISDN digital network services including Basic Rate Interface (BRI) and Primary Rate Interface (PRI) trunks, or network multiple locations in a converged Frame Relay or IP backbone network. Coral provides the flexibility you need to optimize your communications traffic while minimizing costs.

For campus environments, Coral's remote shelf solution can link multiple sites via fiber optic cabling, with remote shelves located up to 20 miles from the main cabinet and administered as a single system. As a disaster-avoidance measure, the Coral remote shelves can be equipped with their own trunks for network access and can include common control and memory.

Coral's advanced networking capability makes it simple and cost-effective to network multiple offices, schools or campus buildings.



Coral Message Center™ – Improve communications with unified messaging

Coral Message Center™ (CMC) dramatically improves communications by providing a single access point for voice, fax and e-mail messages. Tightly integrated with the Coral, CMC provides fast, accurate message notification and retrieval, and an optional TeLANophy feature that enables management from a PC.

With CMC, staff and faculty can use information mailboxes to communicate schedule changes, assignments and other timely information to students, parents and each other.

For staff sharing a single telephone, CMC can establish individual mailboxes and up to 16 individual message-waiting lamps on one digital telephone.

The Integrated Coral Message Center (iCMC) provides full integrated messaging via the telephone

and complete control of calls and messages from the PC – by simply adding a single card.

Wireless Communications – Enhance accessibility anywhere

Faculty, staff and administrators seldom stay in one place all day. Whether at their desk or moving about the building or campus, school staff can be reached at a single number using the system's FlexiCall feature.

Overhead and Telephone Paging – Alert staff instantly

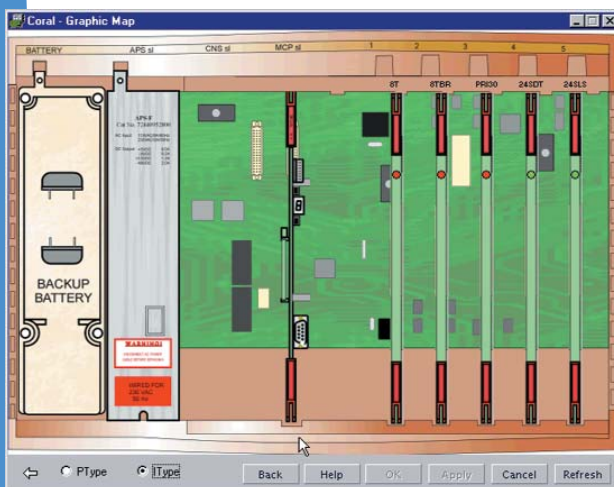
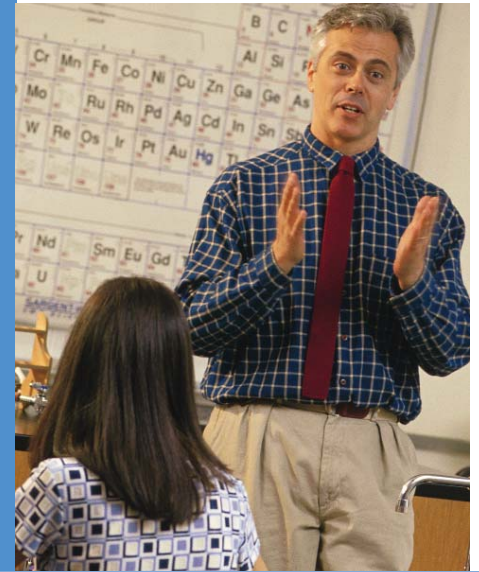
Coral not only provides access to multiple public address paging zones using the Coral Page Adapter, but supports paging through digital telephones as well. Increase paging coverage in areas without overhead speakers by including selected telephones in a page zone.



The Choice for Simple Administration and Management

CoralView – Manage moves, adds and changes with ease

The CoralView family of products is designed to ease day-to-day management of moves, adds and changes. Designed around the comfortable Microsoft Windows look and feel, CoralView provides on-site or remote system design and performance administration with point-and-click simplicity.



CoralView Administrator graphic cabinet layout

CoralView Administrator is a multi-tasking, multi-user platform for programming your Coral system. Define an unlimited number of users, each with their own password. CoralView Administrator maintains a session log displaying all log-in and programming activity. Station design is as easy as drag and drop to the station image on the screen.

The Choice for Full-featured Flexibility

Coral FlexSet™ – Digital telephones

With the Coral FlexSet series of advanced digital telephones, your school's operations will never be restricted by the way your system operates. Available in several models with a wide range of features and options, FlexSets are true information terminals offering versatility and flexibility. FlexSets' scalability is evident in the basic design. From six to as many as 148 user-defined buttons give users virtually unlimited power to define individual preferences.

The optional liquid crystal display presents caller and calling-party information, and when using a FlexSet with soft-keys, the display changes to show applicable feature options for one-touch activation. The FlexSet's hot-dial keypad and hands-free speaker permit fast on-hook dialing, and the highly visible message-waiting indicator announces new messages.

Install optional base-mounted modules to take advantage of Computer Telephony Integration (CTI) and other advanced applications that enable users to communicate and work more efficiently.



- FlexSet 280D
- 28 buttons
 - 2 x 40 LCD
 - full speakerphone



- FlexSet 120D
- 12 buttons
 - 2 x 24 LCD
 - full speakerphone



- FlexSet 120S
- 10 buttons
 - 3 x 24 LCD
 - full speakerphone
 - soft-key operation
 - HDF support

- FlexSet 280S
- 26 buttons
 - 3 x 40 LCD
 - full speakerphone
 - soft-key operation
 - HDF support



The FlexSet 40B may be used as an add-on module with any 280 series terminal. Each 40B module has 40 user-defined buttons for line or feature use, and up to 3 modules may be installed for up to 148 buttons.



Tadiran Telecom, Inc.
6021 142nd Avenue North
Clearwater, FL 33760 USA
Tel 727-523-0000 / Fax 727-523-0010

Visit us at our website: www.tadiran-us.com

Part#: 72447010012

7-2002

Copyright © 2002 Tadiran Telecom, Inc. Specifications subject to change without notice. Contact your authorized dealer for specifics. 1 for Yes, 2 for No interface and TeLANophy are registered trademarks of Active Voice, LLC. Coral FlexAir, Coral Message Center, Coral QNet, CoraLITE, Coral FlexCT, Coral FlexiCom, Coral FlexSet, and iCMC are registered trademarks or trademarks of Tadiran Business Systems Ltd. or Tadiran Telecom, Inc. All other products or services mentioned are the trademarks, service marks, registered trademarks, or registered service marks of their respective owners.